

# Art and Metaphors in Play Therapy

## PRESENTED BY

**John Paul Lilly MS, LCSW, RPT/S**

John Paul Lilly MS, LCSW, RPT/S is a sought-after speaker, practitioner, and author. He is a Licensed Clinical Social Worker, with an emphasis in working with children. He is presently in private practice as a full partner with Sierra Counseling Associates, Inc in Utah. JP is a past member of the Board of Directors for the International Association for Play Therapy, Inc. and that organization's Past President (1997-2000). JP is also the Founder and past National President of Bikers Against Child Abuse Inc., a non-profit organization incorporated to provide aid and comfort to abused children. He currently serves on the International Executive Board of Directors for B.A.C.A., Inc.

JP is a featured presenter at numerous workshops and trainings on Jungian Analytical Play Therapy, Art Work, Therapeutic Metaphors, and all aspects of therapy with children. JP is published in the Journal of Mind and Behavior, and the International Journal of Play Therapy. He has also authored chapters in two compilation books, and been asked to endorse other books. JP presents and trains professionals nationally and internationally on Play Therapy, and has presented at the annual Association for Play Therapy International Conference more than a twenty times.

## Schedule for Friday

8:00-9:00: Morning Registration and Continental Breakfast  
9:00-12:15: Morning Session  
12:15-1:45: Friday lunch (included) & NCAPT Annual Meeting  
1:45-5:00: Afternoon Session  
5:00-6:00: Networking Social

## Schedule for Saturday

8:00-9:00: Morning Registration and Continental Breakfast  
9:00-12:15: Morning Session  
12:15-1:15: Saturday lunch  
1:15-4:30: Afternoon Session

## Target Audience

This conference is designed for licensed counselors, social workers, psychologists, marriage and family therapists, and other licensed practitioners and graduate students who practice or wish to learn more about play therapy techniques and theory.

## Continuing Education

Continuing education credit for this event is co-sponsored by the North Carolina Association for Play Therapy and The Institute for Continuing Education. The programs offers 6.00 contact hours per day, with full daily attendance required. Application forms will be available on site. There is no additional fee for receiving continuing education credit. Continuing education credit is offered for: psychology (APA); social work (ASWB provider 1007); counseling/MFT (NBCC provider 5643); drug-alcohol (NAADAC provider 00243). If you have questions regarding continuing education, please contact The Institute directly at: 800-557-1950; e-mail: [instconted@aol.com](mailto:instconted@aol.com)

## Hotel Reservations

Hotel reservations must be made on your own.

Holiday Inn Express Hotel & Suites (Raleigh SW NC STATE): 877-834-3613  
Rates: \$99.90 (before 2/20). For reservations, mention code NCA.

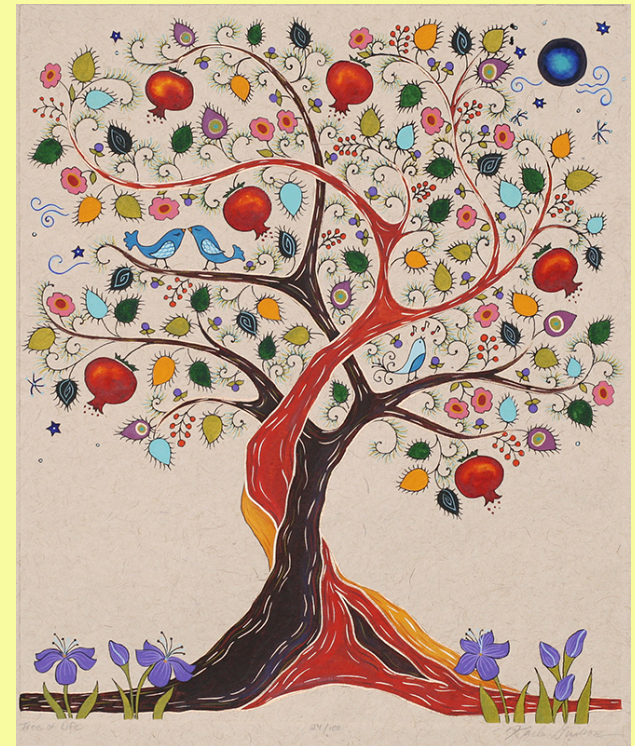


# Art and Metaphors in Play Therapy

## NCAPT 12<sup>th</sup> Annual Spring Conference

**March 7-8<sup>th</sup>, 2014**

**Junior League of Raleigh  
Center for Community Leadership  
Raleigh, NC**



*Tree of Life by Karla Gudeon*

## FRIDAY, MARCH 7<sup>th</sup> - 6 CEUS

### Interpreting children's art work and play therapy

Interpreting child's art work is a critical element to deepening our understanding of the children's psyche and creating new and inventive techniques for the child's healing. This workshop is based on the Jungian theoretical perspective and is designed for the play therapist who wants to deepen the scope of their interventions with children.

#### Learning Objectives:

- 1) Describe the Jungian Analytical theoretical model of the development of the psyche in children
- 2) Explain the dynamic relationship between the child's symptoms and the psychological disturbance in the psyche of the child
- 3) Describe how to approach an expressive piece of art work completed by a child
- 4) Describe how to process a piece of art work with a child from an Jungian Analytical perspective
- 5) Describe how to approach the symbol in children's art work, and interpret it within the context of the child's reality
- 6) Explain how to create soft hypotheses regarding the content of the child's work

## SATURDAY, MARCH 8<sup>th</sup> - 6 CEUS

### Therapeutic metaphors from a Jungian perspective

Using therapeutic metaphors is a powerful way for introducing and creating change in the child. Understanding the process and dynamics of the child's psyche through creating therapeutic metaphors individually designed for each child is a transformative way of engaging the child's issue, activating healing resources from the child's unconscious, and creating a fertile ground for true transformation.

#### Learning Objectives:

- 1) Tell how the child's interests and personal lives are important to creating meaningful therapeutic metaphors
- 2) Cite the critical elements necessary for creating effective therapeutic metaphors
- 3) Explain how to integrate the necessary elements of a therapeutic metaphor to the child's complex issues
- 4) Describe steps to introduce a therapeutic metaphor to a child and how to effectively construct them from the child's unconscious
- 5) Give two examples of metaphors that may be used in the play therapy setting
- 6) Apply skills and information acquired to the clinical setting

### FEES & REGISTRATION

Includes conference, Friday lunch, breaks, and CEU certificate.

### BEST DEAL!!! Before February 6th:

Fees	One Day	Two Days
APT members	\$100	\$195
Non-members*	\$150*	\$270*
Students	\$40	\$65

### Between February 7th and the day before the conference:

Fees	One Day	Two Days
APT members	\$120	\$220
Non-members*	\$170*	\$299*
Students	\$50	\$80

\* Join now as a new member and save! Professional Annual membership to APT & NCAPT is \$95 and includes *Play Therapy Magazine* and *International Play Therapy Journal* and much more!

**Add a \$20 fee for on-site registration.** Student scholarships and volunteer positions available (first come, first serve).

A \$25 administrative fee will be charged for any cancelled registrations.

### Conference will be held at:

Junior League of Raleigh  
Center for Community Leadership  
Junior League of Raleigh  
711 Hillsborough Street  
Raleigh, NC 27603  
919-787- 7480  
Parking in Rear of the building.

### Conference Registration

NCAPT is going green!! Online registration only!

[Register by clicking here](#)

Online registration can also be accessed via our website:  
**[www.ncapt.org](http://www.ncapt.org)**

If you have any question or ADA special needs, please contact Anastasia Arauz, NCAPT Registrar:  
[anastasiaj37@gmail.com](mailto:anastasiaj37@gmail.com)